

Joleena
Pressure Balance Trim
 Finish: **Brushed Nickel** Part no. : **04779820**



Description

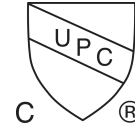
Features

- Temperature and volume control for 1 outlet
- Maximum flow rate at 60 psi: 5.44 GPM
- Bypass for use with diverter-type tub spouts
- Connection type: rough

Item details

List Price \$ 318.00

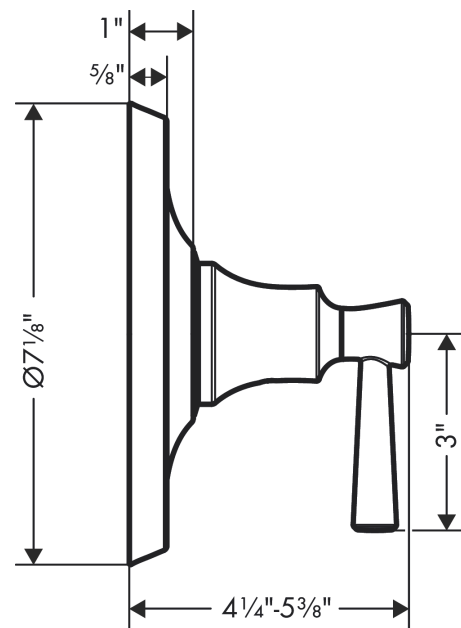
Compliance / Sustainability



Product image



Scale drawing



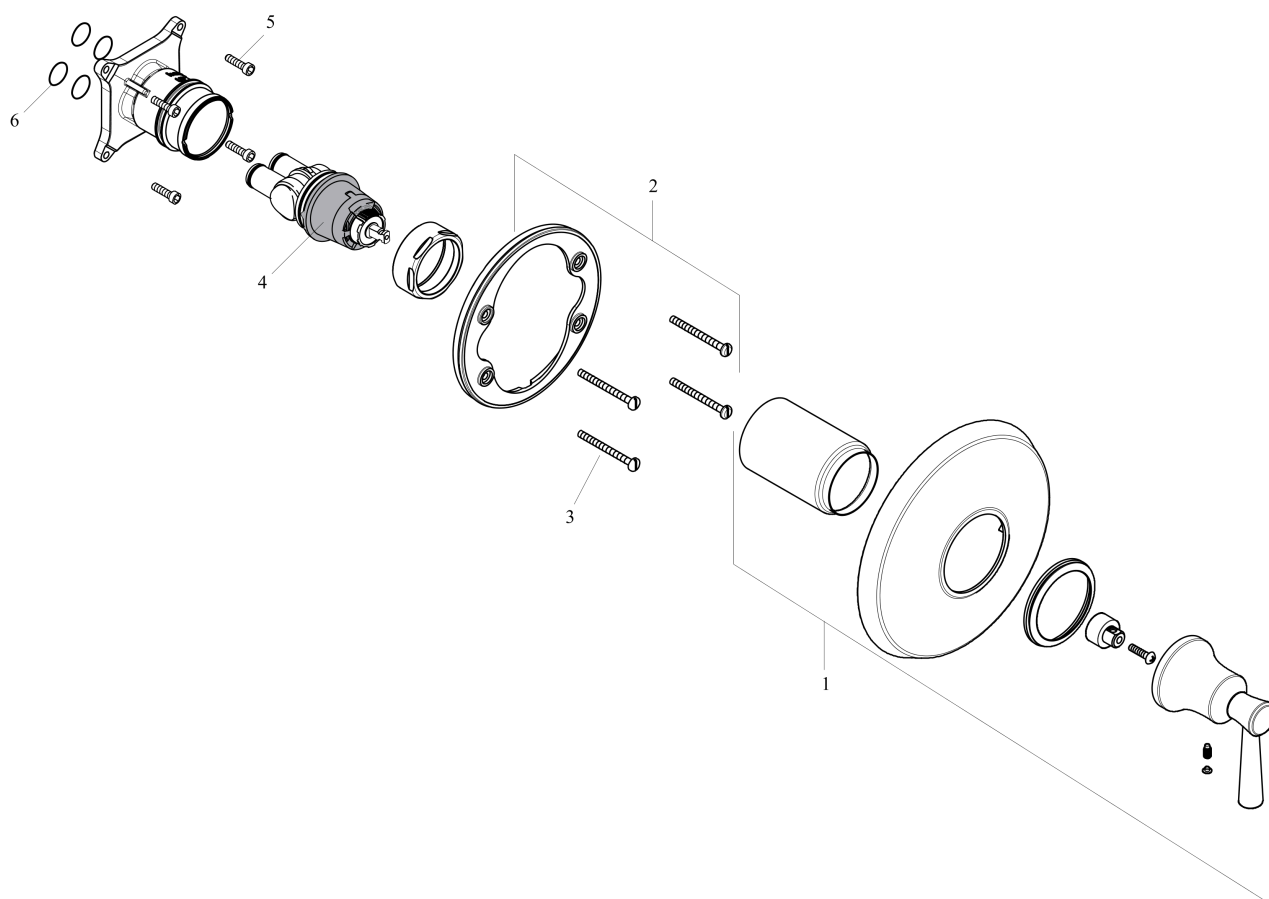
Joleena
Pressure Balance Trim
 Finish: **Brushed Nickel**

Part no. : **04779820**



Exploded drawing

Year of production: >01/20



Joleena
Pressure Balance Trim
 Finish: **Brushed Nickel**

Part no. : **04779820**



Spare parts list

Year of production: >01/20

| Pos. | Description | Part no. | Price | PU |
|------|----------------------------|----------|-------|----|
| 1 | Finish set | 93556820 | - | 1 |
| 2 | holder for escutcheon | 98793000 | - | 1 |
| 3 | set of fixing screws | 96454000 | - | 1 |
| 4 | cartridge, assy | 88727000 | - | 1 |
| 5 | set of screws | 96525000 | - | 1 |
| 6 | O-ring 16x2 | 98133000 | - | 1 |
| a | extension 25 mm | 13595000 | - | 1 |
| b | set of fixing screws | 97747000 | - | 1 |
| c | extension 22 mm (Ø 170 mm) | 13596820 | - | 1 |
| d | base body | 01850181 | - | 1 |